

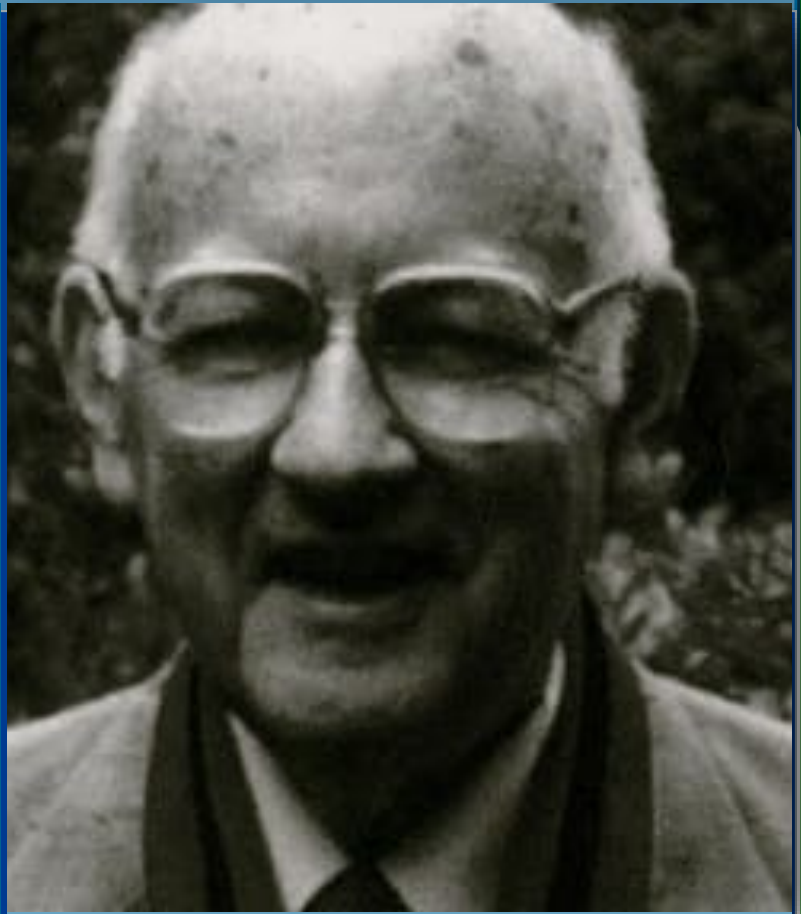
The E. Paul Torrance International Roundtable on Creative Thinking aims to refresh the work and legacy of Dr Torrance internationally especially among today's crop of creativity enthusiasts and scholars, push the boundary of knowledge on creative thinking and giftedness as well as increase knowledge sharing within and beyond the creativity field.

8th Annual E. Paul Torrance International Roundtable on Creative Thinking

*Topic:
"Everyday
Creativity and
Wellbeing"*

Date:

Tuesday 26 July 2022
Venue: Online
Time: 18:00-20:30
(UK/or 1-3.30pm NY,
USA)

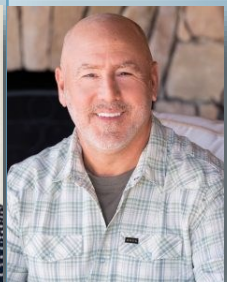


Dr Ellis Paul Torrance—8 October 1915-12 July 2003:
Father of Modern Creativity

Bios of the Torrance Roundtable keynoters, RDCA SIG Panellists, 1st FRC Lecture, & others on pp. 2-6



Torrance Keynoters L-R: Ruth Richards, Sandy Russ, Steven Pritzker, & Jane Davidson. **Chair:** Larry Keiser



RDCA Panellists L-R: Fredricka Reisman, Larry Keiser, Mariette Fourie, Craig Bach & Kristen Betts

**1st FRC
Lecture**

**Inaugural
Guest
Speaker:
Jeff Westphal**

KEYNOTE SPEAKERS FOR THE 2022 TORRANCE ROUNDTABLE



Keynote: Ruth Richards, MD, PhD, Saybrook University, USA

Ruth Richards is an educational psychologist, Board Certified psychiatrist, and professor for almost 25 years at Saybrook University in Creativity Studies, and Consciousness, Spirituality, and Integrative Health, is a Fellow with the American Psychological Association (APA) in Divs. 10, 32, and 48, and a member of Div. 34. She has published numerous articles, edited/written four books on *everyday creativity*, and received the Rudolf Arnheim Award from Div. 10 APA for Outstanding Lifetime Accomplishment in Psychology and the Arts. Dr. Richards' 2018 *Everyday Creativity and the Healthy Mind* (Palgrave Macmillan, 2018 hardbound, 2019 paperback) won a Silver Nautilus Award ("Better Books for a Better World"). A forthcoming coedited book with David Schuldberg, and Shan Guisinger, features some remarkable contributors, and brings a transformative vision to social scientists in our profoundly interconnected and complex world. The intent is to reawaken awareness of the complexity, interdependence, and multilayered complex adaptive systems of life and of the realms of consciousness we inhabit, along with a new awe, humility, and wonder. Due out in 2020-2021 from Oxford University Press, *Chaos and Non-linear Psychology: Keys to Creativity in Mind and Life*, introduces to mainstream linear social sciences, a new worldview. Moving beyond that, it also can affect how each of us live and see our lives—a new view of self-in-world.

Dr. Richards' work spans education, clinical areas, social action, spirituality, aesthetics and awareness, and the importance of chaos and complexity theories in areas including our dynamic identity, interconnection, mutual awareness, expanded empathy, and forward potentials for evolution in a challenged world, and evolving cosmos. Earlier, Dr. Richards was Principal Investigator at McLean Hospital and Harvard Medical School, working with Dennis Kinney and others, on development and validation of the *Lifetime*

Creativity Scales. These were written up by Daniel Goleman in *The New York Times*, while highlighting new findings on risk for bipolar disorder and an everyday creative "compensatory advantage" among *better* functioning relatives. The message is mainly about health.

She advocates, now as then, for a "new normal," broader, more diverse, more exploratory and process-oriented, more open to experience and beyond ego, while helping free us all to embrace risk-taking, discovery, and living beyond fixed expectations, toward our higher humanistic, and human, potential. Aspects of this pattern are already seen, in part, in self-actualizing individuals in humanistic psychology. There is also implication for a more integrated self, broader awareness of the world, and living toward a larger good. Dr. Richards thus sees dynamic creative living as central to advancement of individuals and cultures, both separately and together, and to emergence of a new worldview and view of self-in-world.



Keynote: Sandra Russ, PhD, Case Western Reserve University, USA

Sandy Russ is a clinical child psychologist, Distinguished University Professor and Louis D. Beaumont University Professor at Case Western Reserve University, Ohio, USA, where she has been working since 1975. Sandra holds a PhD in Clinical Psychology from the University of Pittsburgh and specialized in child psychology. Sandy's research focused on understanding how pretend play is involved in child development and in child psychotherapy. She has worked with her students to develop a measure of pretend play that assesses both cognitive and affective processes. She has also carried-out a number of studies that have investigated the relationship between pretend play and areas of adaptive functioning such as creativity, coping, and emotional understanding. Sandy is the author of *Pretend Play in Childhood: The Foundation of*

Adult Creativity (2013), American Creativity Association.



Keynote: Steven Pritzker, PhD, Saybrook University, USA

Steven Pritzker designed and served as the director of the Creativity Studies Specialization at Saybrook University for 17 years where he is still on the faculty. Steven has guest lectured at universities and spoken at conferences in many countries. He co-created and was an Editor-in-Chief of all three editions of *The Encyclopedia of Creativity*. His research has dealt with creativity and writing in television; collaborative creativity in writing and business; creativity and spirituality; audience flow; the effect of alcohol on creativity; comedians and longevity and the creative process in high achieving writers. Dr. Pritzker is Past President and a Fellow of Division 10 of The American Psychological Association (Psychology of Creativity, Aesthetics and The Arts). He also served on the Educational Coalition of the American Psychological Association where he was Executive Producer of the video *Creativity in the Classroom*. Prior to entering academia, Steven worked in network television where he was a Writer and/or Executive Story Editor, Producer, Supervising Producer or Executive Producer on over 200 network television shows. His credits include writing episodes of the Emmy winning *Mary Tyler Moore Show* and *Room 222*.



Convenor & Chair, KIE Conference: James Ogunleye, PhD

KEYNOTER FOR, & CHAIR OF THE 2022 TORRANCE ROUNDTABLE



Keynoter: Jane Davidson, PhD, University of Melbourne, Australia

Jane Davidson is a Professor of Creative and Performing Arts and Acting Director of the Victorian College of the Arts at the University of Melbourne, Australia. She chairs the Creativity and Wellbeing Hallmark Research Initiative which involves representation from seven faculties across the University. It investigates what it means for people to achieve wellbeing and how creativity can be harnessed to achieve this aim. Previous roles have included Head of Performing Arts (2020 – 2021), Associate Dean Research (2018-2020) and Associate Dean Engagement (2016-2018). From 2011-2018, Jane was Deputy Director of the Australian Research Council's Centre of Excellence for the History of Emotions (CHE) where she led

the Centre's Performance Program as well as Arts Industry Partnerships, Education and Outreach and Media and Communications. Jane Davidson has published extensively and has been the successful recipient of research grants in Australia and internationally and is a frequent reviewer for academic funding bodies and publishers. Her distinctive approach to opera direction has received much critical praise. Recent industry collaborators in Australia include West Australian Opera and Victorian Opera



Chair: Larry Keiser, PhD, Drexel University, USA

Larry Keiser is Assistant Clinical Professor and Program Director for the graduate and undergraduate Creativity & Innovation degree and certificate programs in Drexel University's School of Education. He

also serves as the Associate Director for Drexel's Freddie Reisman Center for Translational Research in Creativity & Motivation (FRC), an international center whose team of creativity experts and education and business practitioners identify and share the best research in creativity and motivation from all disciplines, and Co-Director of the Drexel/Torrance Center for Creativity & Innovation. Dr. Keiser's other research activities center on investigating individuals' creativity levels and workplaces (K-16 education, corporate, and business), particularly how education leaders' and corporate/business leaders' creativity mindsets relate to the entrepreneurial mindset. He presents on these topics nationally and internationally, has served on the Board of the American Creativity Association, and has Chaired the E.P. Torrance International Roundtable on Creative Thinking for the annual Knowledge, Innovation and Enterprise (KIE) International Conference for the last several years. Dr. Keiser has been funded by the US and PA Departments of Education, NSF, and private foundations in collaboration with other Drexel faculty and external partners to design and implement educational partnerships. The projects include designing/implementing national and PA school/district partnerships in support of alternative preparation pathways for K-12 teachers; conducting professional development activities for improving pre-service and in-service teachers' STEM content knowledge and pedagogy; designing/implementing school leadership improvement programs; better integrating appropriate technology into PreK-16 teaching and learning processes; and promoting creativity and innovation in schools, the workplace, and in life.

1st FRC Lecture—Drexel University Freddie Reisman Center For Transactional Research In Creativity and Motivation



Inaugural Guest Speaker: Jeff Westphal

Jeff Westphal is an entrepreneur, author, and Founder of the new venture, MeaningSphere, Inc. He is a recipient of the American Creativity Association (ACA) Champion of Creativity Award and in 2014, served as a panelist for the ACA World Conference, *Creativity in Action*, sponsored by the Drexel/Torrance Center for Creativity and Innovation Lecture Series entitled "Creativity as a Bridge Between Education and Corporation".

Prior to Jeff's role as Founder of MeaningSphere, he served as CEO of Vertex, Inc. As CEO, he spent decades growing and developing Vertex into a global leader in tax software. He maintained an eye on transformation in the tax industry while leading a developmental culture within the company and guiding Vertex to 10-fold growth during his twenty-year tenure as CEO, serving fortune 500 companies like Apple and Starbucks. Vertex went public on the Nasdaq exchange in July 2020. Jeff served as Chairman of the Board from 1996 to 2020. Vertex undertook an IPO on the Nasdaq

exchange in July 2020.

Jeff became intent on using his resources and experience to advance transformational change toward deeper meaning in business, education and autism. His new venture, MeaningSphere, Inc., looks to support people seeking to discover, create and pursue deeper meaning in their work. He co-executive produced the documentary film, "Unschooling," that explores the intrinsic meaning-based learning method. Along with his wife, Jenifer, and through the film company, Wavelength Productions, that she founded and leads, the Westphals expect to release, "Let Me Be Me," a feature documentary film about the relationship-based approach their family undertook to support their son, Kyle, diagnosed with autism.

Jeff is also a close collaborator with Dr. Fredricka Reisman (Drexel University) where together they created the Drexel University Freddie Reisman Center for Translational Research in Creativity and Motivation.

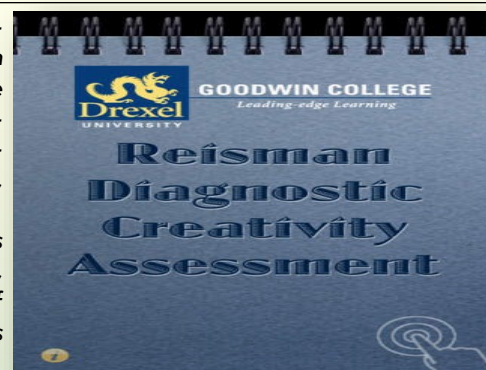
REISMAN DIAGNOSTIC CREATIVITY ASSESSMENT (RDCA) SIG

Conference participants are cordially invited to attend the **Reisman Diagnostics Creativity Assessment Special Interest Group (RDCA SIG)** that will take place on Tuesday 26 July 2022. Presentations will be Moderated by co-developer of the RDCA tool, Dr Larry Keiser, Clinical Assistant Professor and Director of Special Projects & Certification Officer at Drexel University.

The Reisman Diagnostic Creativity Assessment (RDCA) is a free downloadable

Apple App (via iTunes) which captures eleven creativity research-based factors such as originality, fluency, flexibility, tolerance of ambiguity, resistance to premature closure, risk taking, intrinsic and extrinsic motivation, divergent and convergent thinking, and elaboration.

Some items in the RDCA extends Torrance Tests of Creative Thinking (TTCT), which is predicated, in part, on the work of Joy Paul Guilford. The RDCA SIG honours Dr Reisman's work.



TUESDAY 26TH JULY 2022, 15:30-17:00 (UK/OR 10.30AM-12 NOON IN NY, USA)

TOPIC: "How Do Creativity and Motivation Relate as Assessed by the RDCA and RDMA?"



Fredricka Reisman, PhD, Drexel University, USA

Fredricka Reisman is Emerita Professor and Founder Drexel School of Education; Creator and Former Director, Creativity and Innovation Programs; Director Freddie Reisman Center for Translational Research in Creativity and Motivation (FRC); Co-Director, Drexel-Torrance Center for Creativity and Innovation, and former Drexel Assistant Provost- Assessment & Evaluation. Dr. Reisman was awarded the 2001 New Millennium Foundation Technology Award, the national 2002 Champion of Creativity Award by the American Creativity Association (ACA) and was the recipient of the 2017 National Association for Gifted Children E. Paul Torrance Award. She was honored in Spring 2020 by Drexel where the university-wide faculty creativity award has been renamed "Freddie Reisman Faculty Scholarly and Creative Activity Awards". She is Co-Founder- Education, Learning, and Brain Sciences (E-LaBS) Research Collaborative; and President Emerita, American Creativity Association. Dr. Reisman continues to teach in the Creativity & Innovation programs and to

chair and serve

SIG PANELLISTS

on dissertation committees for doctoral students interested in the Creativity & Innovation concentration. Her PhD in Mathematics Education is from Syracuse University. Prior to Drexel, Dr. Reisman served as Professor and Chair of the Division of Elementary Education at the University of Georgia; grades 3 and 5 elementary, middle school, high school mathematics teacher in New York State; and as a mathematics education instructor at Syracuse University. Dr. Reisman has been awarded over \$14,800,000 private and government grants to support her research and teacher ed projects and has served as evaluator on funded engineering projects and numerous Pennsylvania and New York State university teacher certification programs. She has created several books, contributions to books, journal publications, and assessments that focus on mathematics learning and teaching and creativity applications including a 2021 co-authored book published by Routledge entitled *Using Creativity to Address Dyslexia, Dysgraphia, and Dyscalculia: Assessment and Techniques*, and is co-author of a 2023 book entitled *Creativity and Motivation Research Translated to Benefit Teachers and Students: Lab to Learner* contracted with Cambridge University Press. She has served since 2013 as editor for the Knowledge, Innovation & Enterprise (KIE) conference books. You can email her at fred-die@drexel.edu.

Craig Bach is an associate research professor at Drexel University in the School of Education and Director of Evaluation for the Freddie Reisman Center for Translational Research in Creativity and Motivation and the Education Passport. An expert in learning assessment and analytics, accreditation, program evaluation, and instructional technologies, Craig is an education leader with demonstrated success developing impactful and relevant education products and services across a broad range of educational types and settings, including early learning, K-12 and post-secondary settings as well as programs in for-profit, public and pri-

vate institutions. Craig has focused his efforts on developing sustainable, data-informed, value-add approaches to challenges facing institutions in response to demographic and market shifts and the current COVID-19 pandemic crisis. Prior to his current role, Craig was Goddard Systems Inc.'s vice president of education, where he led the educational programming and training for Goddard Schools. He also served as Drexel University's vice provost for institutional research, assessment, and effectiveness, and as vice president of the Office of Institutional Effectiveness at Kaplan Higher Education. Craig holds degrees from the University of Texas at Austin in mathematics and philosophy, and a master's degree in mathematics and a doctorate in logic and the methodology of science from the University of California, Berkeley. He also serves as a member of The Goddard School's Educational Advisory Board, a team of acknowledged experts in various fields of early childhood education.



Panellist: Craig Bach, PhD, Drexel University, USA

Continued from page 5

RDCA SIG PANEILLISTS



Panellist: Mariette Fourie, DEd, North-West University, South Africa

Mariette Fourie, a DEd graduate in Educational Psychology, with well-established knowledge, experience, and expertise in mixed method research design (extensive quantitative research), is the Quality Manager: Academic Programmes, and a proud affiliated member of the Optentia research unit at the North-West University (NWU) in South Africa. Mariette is rendering support and professional statistical analysis to postgraduate students and academics, as well as national and international studies. She retains more than 20 years' experience in education. Mariette is an international facilitator for the Online Learning Consortium, offering online professional development workshops pertaining to Neuro, Cognitive and Learning Sciences, as well as the Instructional Designer Certificate Program. She is further an affiliated researcher of the Education, Learning and Brain Sciences (E-LaBS) in the School of Education, Drexel University. Mariette was appointed as subject matter expert for Drexel University in Mind, Brain and Education sciences and the Learning Sciences during 2020 and 2021 and developed various course content in the Higher Education Leadership Program. She has also presented numerous professional development workshops for faculty on teaching, learning, and assessment nationally and internationally. Mariette's expertise further includes Higher Education (HE) Research and Develop-

ment, Scholarship of Teaching and Learning (SoTL), and the Continuous Professional Development (CPD) of faculty.

Her DEd study developed the MEI-PAC (Model to engender information processing ability in the classroom) and included the theoretical frameworks of Positive Psychology, Cognition, and Educational Neuroscience. She has investigated the role of various learning theories (the theory of the mind, psychosocial, cognitive, socio-constructivist, social cognitive, and metacognitive), as influenced by these theoretical frameworks, in how learners learn best. As part of her master's degree in Educational Psychology, Mariette developed the SELOC (Teacher Efficacy and Locus of Control Scale). The findings of her study contributed to the professional development of teachers to better prepare them and to maintain a supportive setting in which they can grow professionally and contribute to student achievement and academic success. Mariette obtained a postgraduate diploma in higher education with specialization in academic development focusing on enabling disruptive spaces towards facilitating the epistemological discourse towards transformation and social justice in higher education. These disruptive spaces are facilitated from ideology to engaged scholarship and pedagogic responsiveness in knowing, becoming, and being—a reflexive praxis approach. This qualification was further underpinned by a critical and social realist approach.

Mariette's immersed research interest enables her to further contribute to the interrelated and interdisciplinary fields of educational neuroscience, educational psychology, and neuropsychology. Mariette's research is further inspired by the epistemic becoming of students in higher education (HE) with an emphasis on epistemic justice and quality in HE. Mariette regard herself as a critical realist, mapping the ontological character of social reality. Her professional character further portrays a strong disposition towards social justice and transformation in HE. Her current research focuses on the provision of epistemological access in HE disciplines focusing on epistemic cognition and assessment. In classrooms where teachers explicitly focus on the arguments and justifications for ideas in their discipline (i.e., emphasising not just the what but also the why and how of learning), students are more likely to engage in effective epistemic cognition. The overall quality in HE is a prerequisite to equip students with the knowledge, skills, and the competencies that they need to be successful after graduation. Within the ambit of fitness for purpose and transformation, quality is defined as achieving impact in teaching, learning and assessment (TLA) within an overarching fitness of purpose framework as it refers to knowledge creation focusing on epistemic justice and the provision of epistemological access in higher education.

Kristen Betts is a Clinical Professor in the School of Education at Drexel University, USA. Dr. Betts has over 20 years of experience in higher education and serving in key leadership positions within private, public, and for-profit institutions. Dr. Betts teaches in the Mind, Brain & Learning certificate program, the Master's program in Higher Education Leadership, the Master's program in Creativity & Innovation, and the Doctoral program in Educational Leadership & Administration. She is also the founding Director of the Education, Learning and Brain Sciences (E-LaBS) Research Collaborative. Additionally, she serves as an Advisory Board Member for the Freddie Reisman Center for Translational Research in Creativity & Motivation. Dr. Betts' expertise is in online and blended education, curriculum and instructional design, and evaluation. Her research focus is on Mind, Brain, and Education Science, creativity, technology-enhanced learning, Online Human Touch, and professional development. Dr. Betts is a Fulbright Specialist, Middle States Commission on Higher Education peer evaluator, and an instructor with the Online Learning Consortium certificate programs. Dr. Betts is a grant reviewer for the Hong Kong Grants Council and has been a reviewer for 14 journals and publishing companies. Dr. Betts has also been a keynote and invited speaker at conferences and government-supported events in Sweden, South Korea, South Africa, Canada, and across the United States. Dr. Betts has served as lead the investigator on five international studies to examine the awareness of neuromyths, general knowledge about the brain, evidence-based practices, and creativity across higher education, PK-12 education, and coaching.



Panellist: Kristen Betts, EdD, Drexel University, USA

Contact us:
E: kieteam@kiecon.org
www.kiecon.org
© KIE Conference May 2022

MEET OTHER KEYNOTERS FOR THE KIE CONFERENCE IN-FILLED EVENTS

Kaufman Family Research Symposium

27 July 2022 Time: TBC

Topic:
“What is the Current State
of Affairs of IQ Testing?”



Invited Keynote: Cecil R. Reynolds, PhD, Emeritus Professor of Educational Psychology, Professor of Neuroscience, and Distinguished Research Scholar at Texas A&M University, USA

Global Comparative and International Education Forum (Global CIE Forum) Roundtable

28 July 2022 Time: TBC

Topic:
“Global Trajectories and Discourses
in Comparative and International
Education Policies and Research”



Keynote: Stephen Carney, DPhil, President of the Comparative Education Society in Europe (CESE) & Professor of Educational Studies at Roskilde University, Denmark

World Education Fellowship Centenary Lecture

28 July 2022 Time: TBC

Topic:
“The School Systems, the Pedagogical
Practice and Approaches to
Teaching and Learning”



Keynote: Sebastian Engelmann, PhD, Assistant Professor of History and Theory of Pedagogical Action and Thought at the University of Education Karlsruhe, Germany



Keynote: W. Joel Schneider, PhD, Associate Professor, Temple University, USA



Panellist: David Turner, PhD, Emeritus Professor, University of South Wales, UK & Beijing Normal University, China



Lead Discussant: Gillian Hilton, PhD, Vice President, British Federation of Women Graduates, & Former Head of Education at Middlesex University, UK